

2001



Poches parachutes Reserve containers



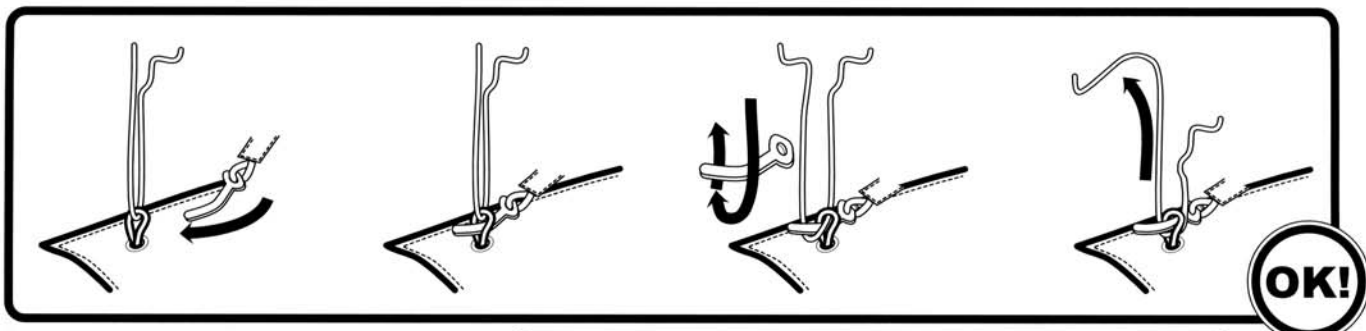
SUP' AIR

Z.I. de Vovray ▼ 14, avenue des Vieux Moulins ▼ F74000 ANNECY

TEL : +33 (0)4.50.45.75.29 ▼ FAX : +33 (0)4.50.52.78.70

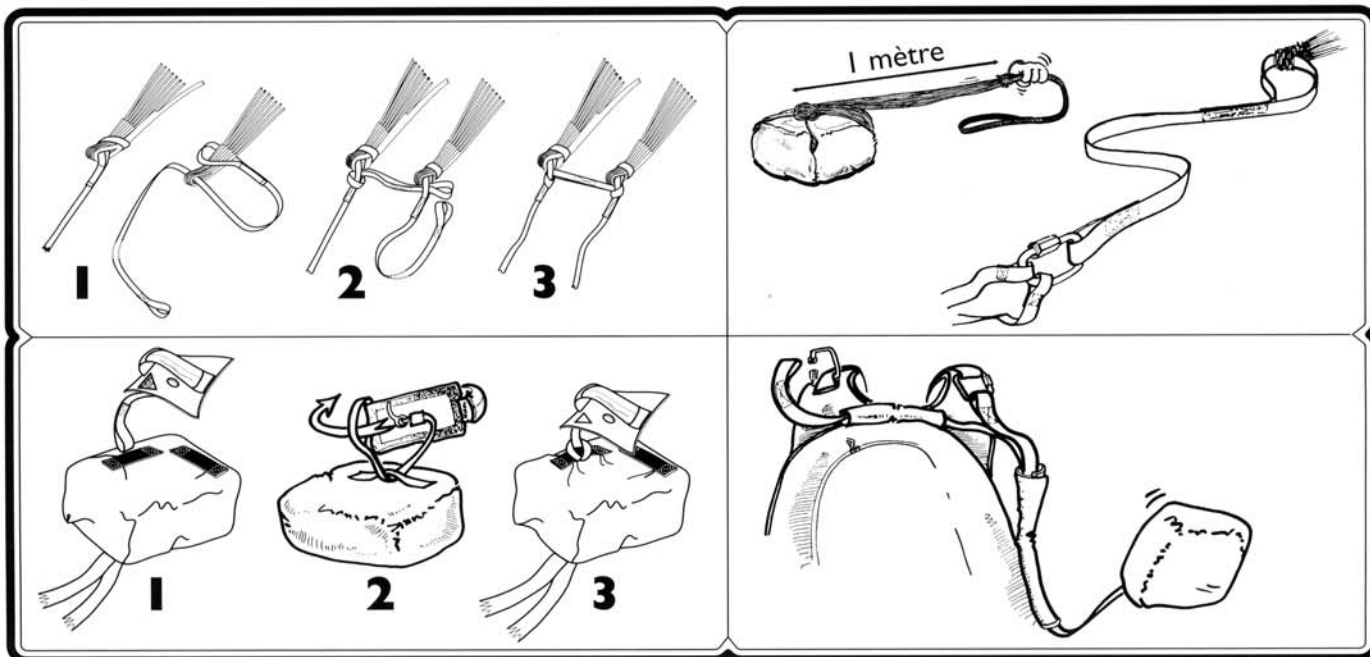
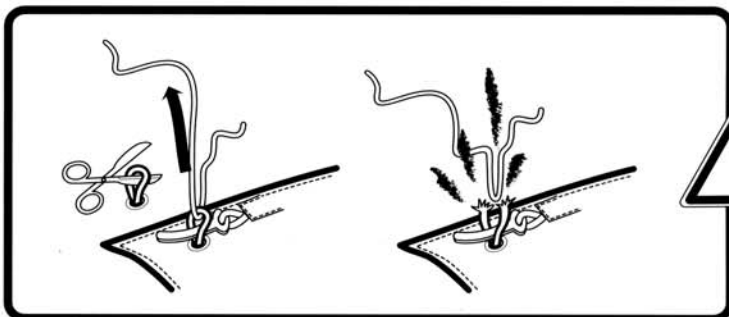
E-Mail : info@supair.com ▼ Web : <http://www.supair.com>

Ce document n'est pas contractuel. Sup'Air se réserve le droit d'apporter à ses produits toute modification utile ou nécessaire. Reproduction même partielle interdite. © Sup'Air 2001. This document is not a contract. Sup'Air reserve the right to alter or modify its products without notice. No reproduction without permission. © Sup'Air 2001.



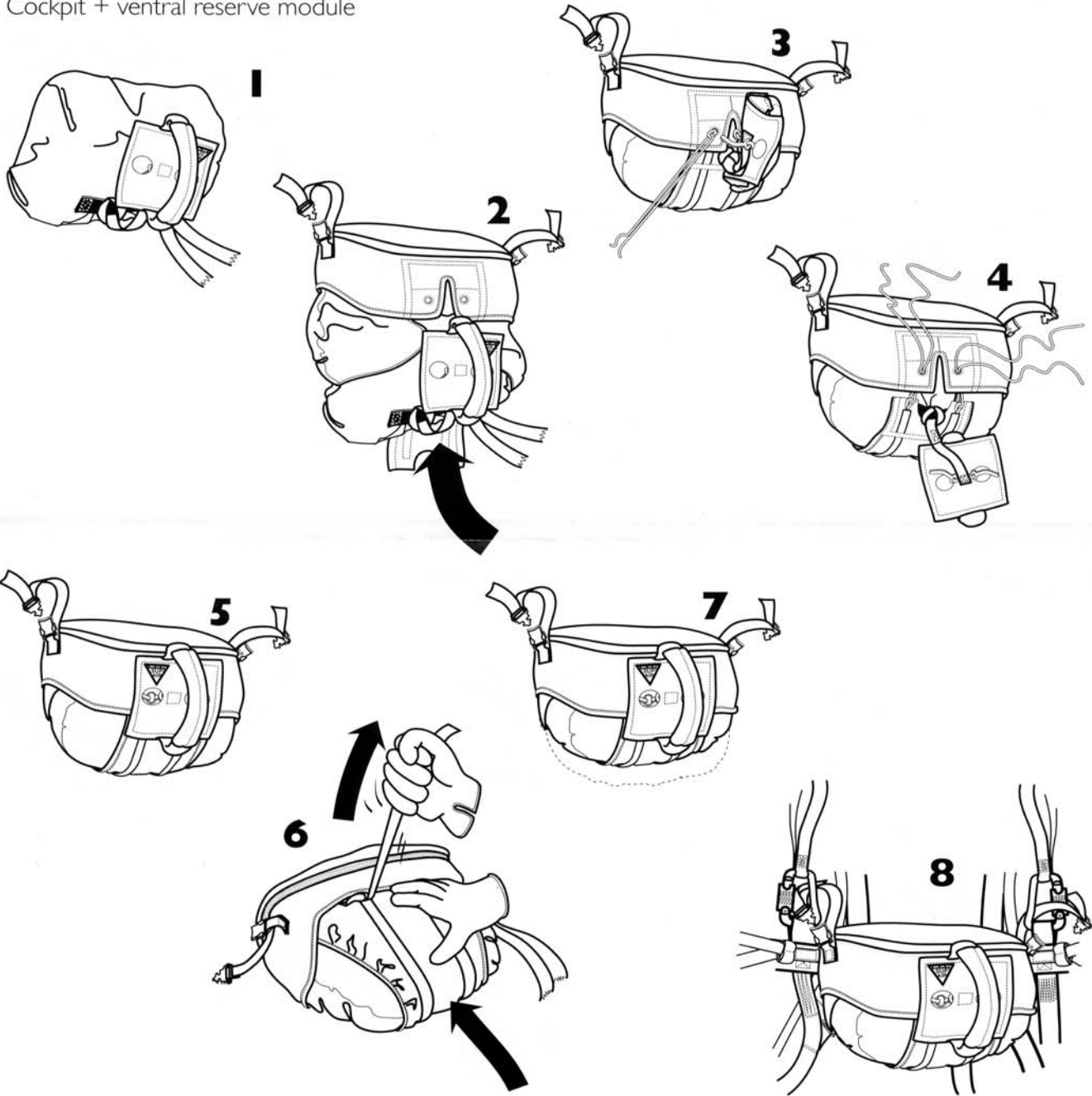
Attention ! Après installation du parachute dans la sellette, effectuez **IMPERATIVEMENT** une simulation sous portique pour vérifier que le système de libération fonctionne et que le parachute sort facilement.

Warning ! After positioning of the parachute inside your harness, you must **imperatively** test it on the ground to check if the release system works nominally and if the pod is easily released outside the harness.



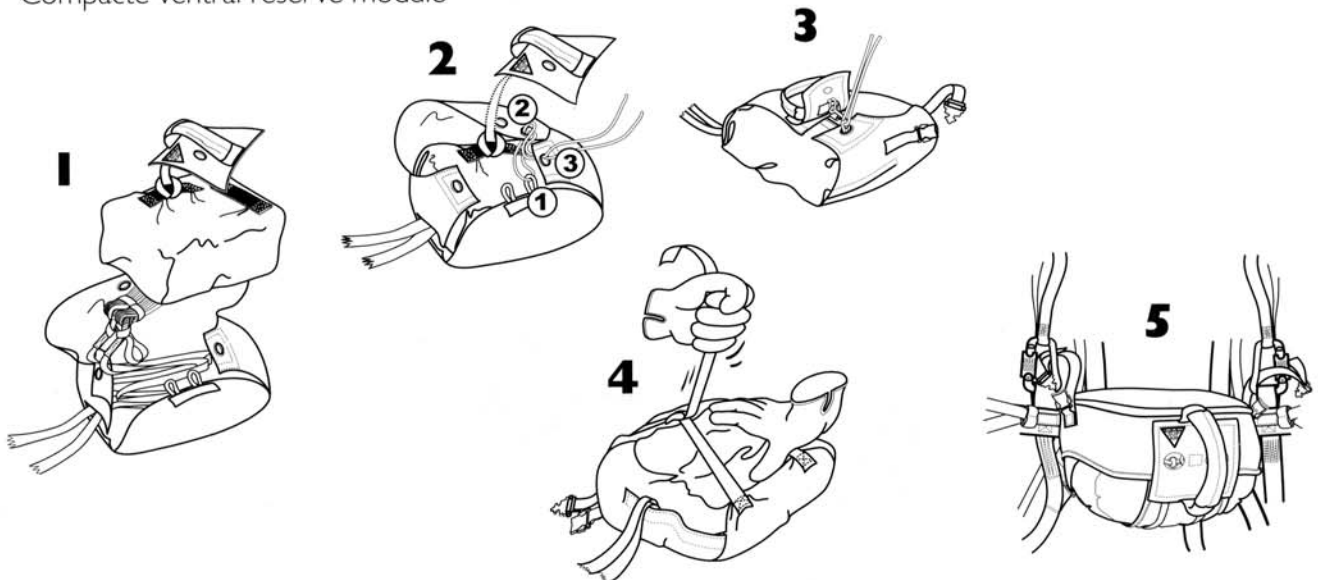
Cockpit + poche parachute ventrale

Cockpit + ventral reserve module

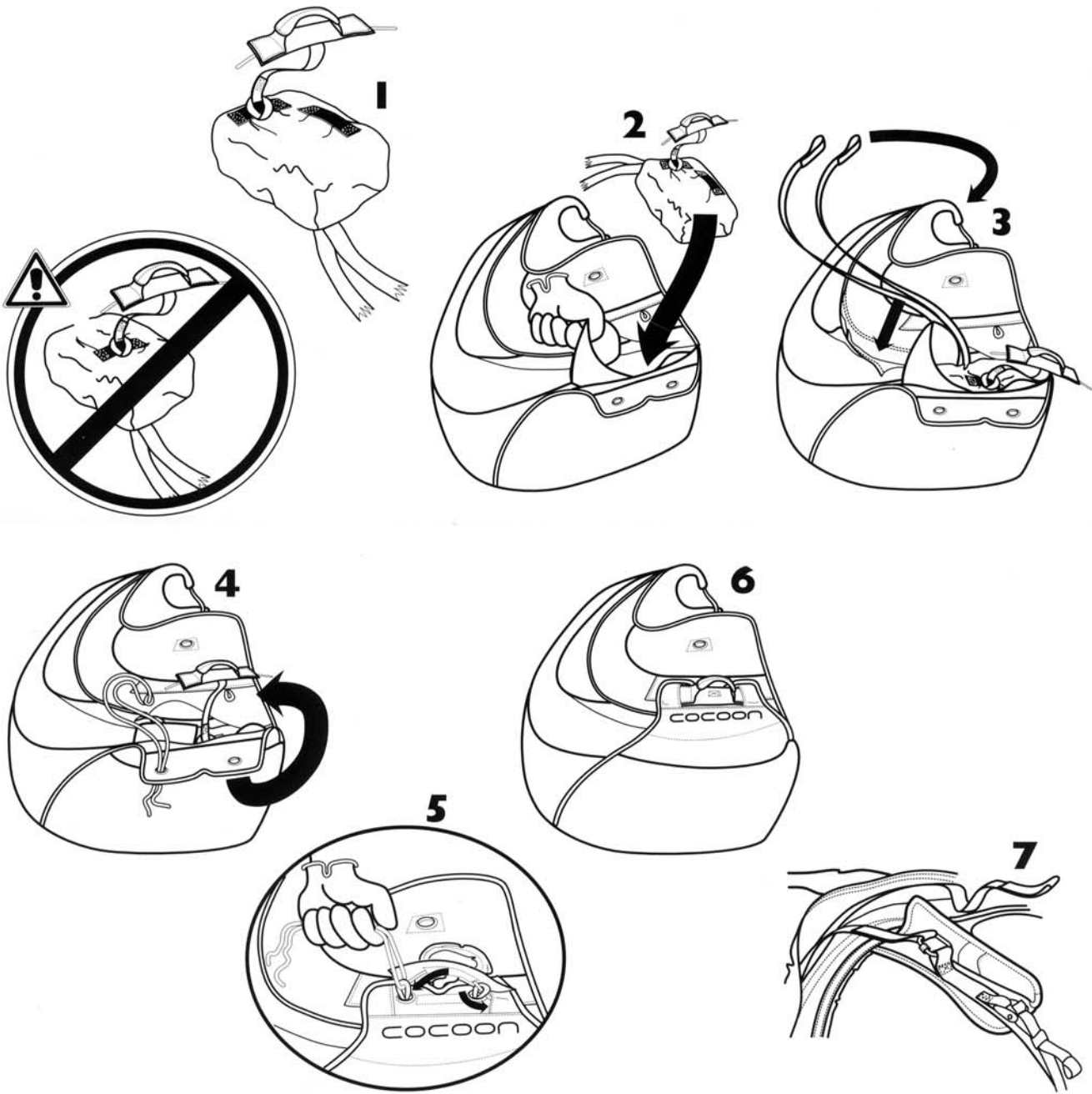


Poche parachute ventrale compacte

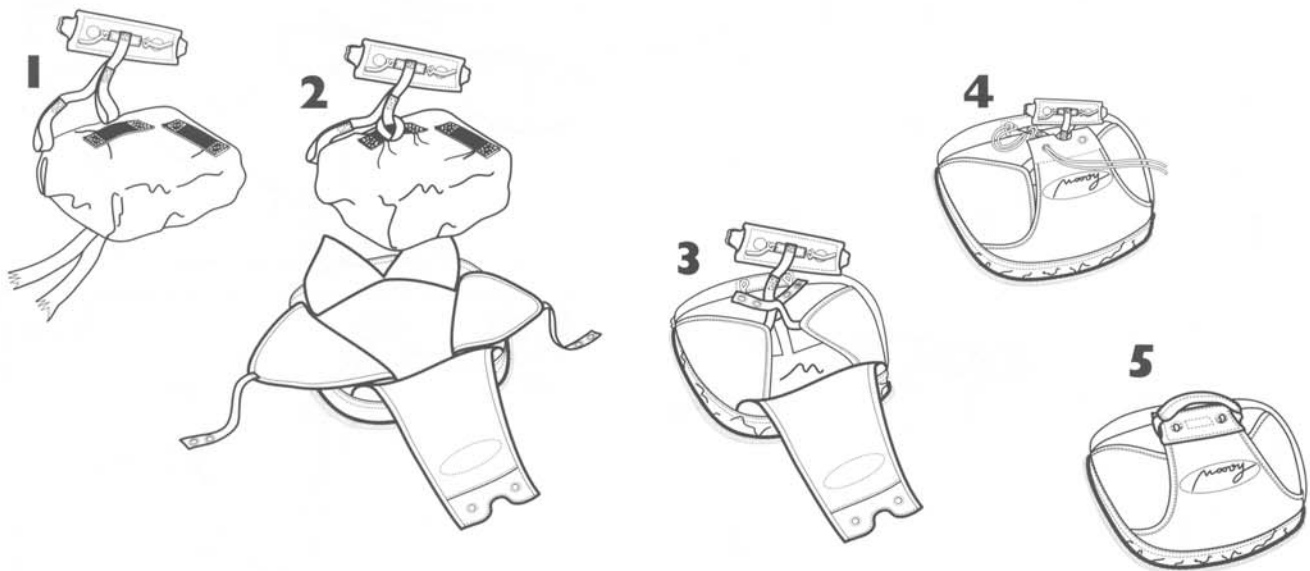
Compacte ventral reserve module



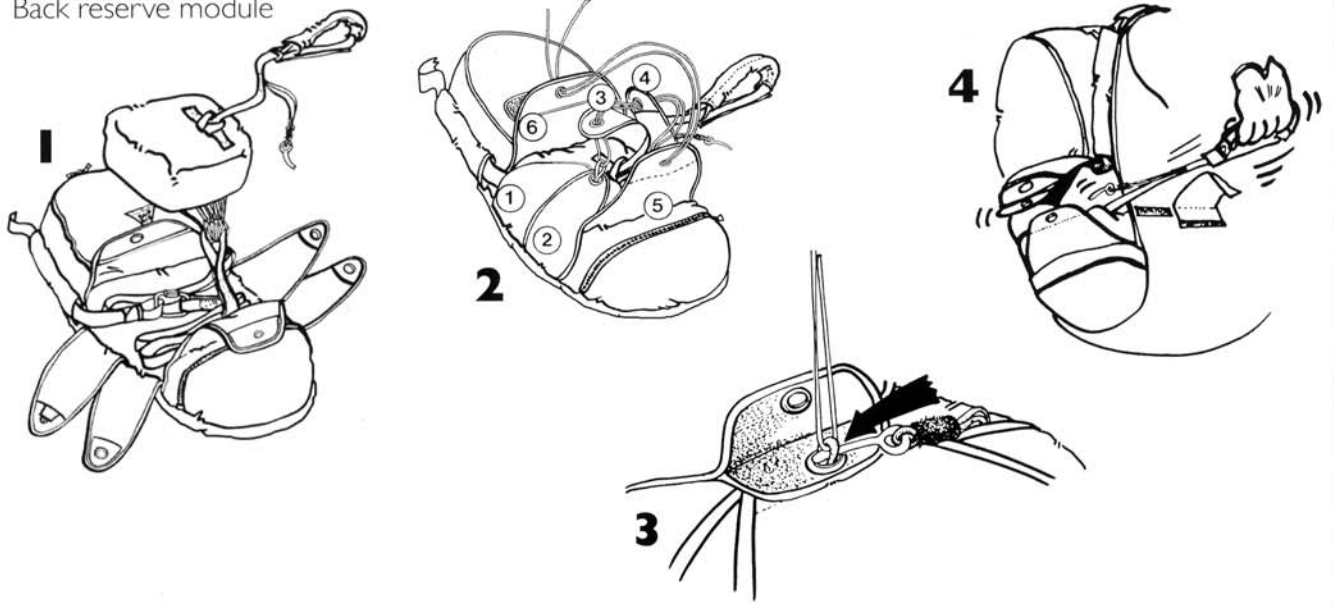
Cocoon & XC



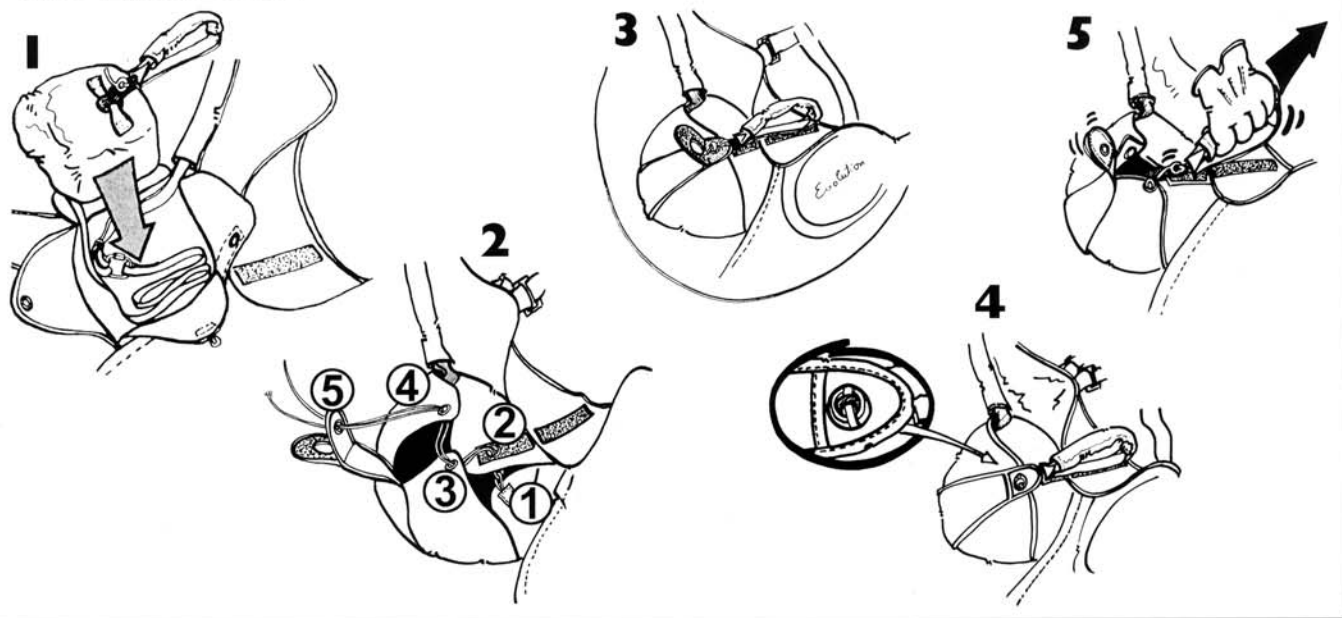
Moovy



Poche parachute dorsale
Back reserve module



Side (Evo & Profeel)



Top

